

Sun River Apartments

402 River Falls Road, Suite 100
Edwardsville, KS 66111
(913) 422-0556

<http://www.vwplaces.com/43399>

Sun River Apartments offers one-, two- and three-bedroom apartments. Maximum income limits may apply.



Maple Ridge Apartments

515 E. Morse Avenue
Bonner Springs, KS 66012

<http://www.midamproperties.com/mapleridge.html>

Maple Ridge Apartments offers one-bedroom apartments to persons aged 55 and older who have incomes at or below 60% of the Area Median Income.



HUD FY2013 Income Limits Summary

	<u>50% AMI</u>	<u>80% AMI</u>
1 Person	\$24,950	\$39,900
2 People	\$28,500	\$45,600
3 People	\$32,050	\$51,300
4 People	\$35,600	\$56,950
5 People	\$38,450	\$61,550
6 People	\$41,300	\$66,100

Be sure to contact individual properties to find out their income limits and rental rates.

**Brochure Created by Bonner Springs
Housing Authority**

Bonner Springs Housing Authority Mission Statement

To help families and individuals with low and moderate incomes by providing safe, affordable housing and partnering with community service agencies in promoting economic opportunity in a suitable living environment free from discrimination.

420 N Park Avenue
Bonner Springs

Phone: (913) 441-3816

Fax: (913) 422-3750

E-mail: bonnerha@bonnersprings.org



Bonner Springs/ Edwardsville Area Affordable Housing Guide



Properties listed in this guide receive Federal or State subsidies to provide housing options to low-income families.

The information in this guide is subject to change.

Please contact properties directly for the most up-to-date information.

How to Choose an Apartment

1. Sort through your priorities before you start looking for an apartment.
2. Make a list of apartment complexes that you're interested in.
3. Call each apartment complex with a set of questions. Find out the apartment's pet policy if you have pets, ask if there is a waiting list or when an apartment might become available. If the apartment meets your needs, ask to set up an appointment to view an apartment.
4. Show up for your appointment time.
5. Carefully observe the exterior of the complex.
6. Carefully observe the interior of the apartment.
7. Visit at night if you can to observe tenant behaviors and to identify safety issues.
8. Ask if there are any specials or promotions.
9. Inquire about deposits and fees. Find out what utilities are included with the rent.
10. Ask for an application.

Source: www.wikihow.com

Bonner Springs Housing Authority

420 N Park Avenue
Bonner Springs, KS 66012
(913) 441-3816

<http://www.bonnerrsprings.org>

BSHA is the Public Housing Authority for the City of Bonner Springs. Studios, one-, two-, three- and four-bedroom apartments are offered through the Public Housing Program. Rents are based on income typically and are adjusted periodically to reflect increases or decreases in household income.

The Public Housing Program serves families at or below 80% of the Area Median Income.

BSHA maintains a waiting list for the Public Housing Program.

Kansas City Kansas Housing Authority

1124 N. 9th Street
Kansas City, KS 66101
(913) 281-3300

<http://www.kckha.org>

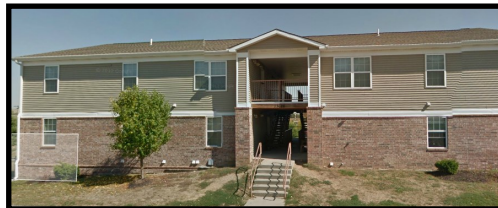
Like BSHA, the KCK Housing Authority offers the Public Housing Program. In addition, they offer the Section 8 Program which covers the Bonner Springs area.

The KCK Housing Authority maintains a waiting list for their programs. The waiting list is subject to closure due to a high number of applicants.

Bonner Highlands

13132 Kansas Avenue
Bonner Springs, KS 66012
(913) 441-5152

Bonner Highlands Apartments offers one-, two- and three-bedroom apartments. Applicants must income qualify.



Edwardsville Court

531 S 4th St
Edwardsville, KS 66111
(913) 441-6007

Edwardsville Court is a Project Based Section 8 Program for seniors who have reached age 62 and disabled adults. One-bedroom apartments are available to prospective residents on a waiting list. Rents are based on income.



Nettleton Manor

111 E Kump Avenue
Bonner Springs, KS 66012
(913) 422-7671

Nettleton Manor is a residential living community for seniors who have reached age 62 or disabled who are 18 years of age and older. One and two bedroom apartment homes are available to prospective residents on a waiting list based on current leasing and selection criteria. Rents are determined by each household's adjusted gross income.

